

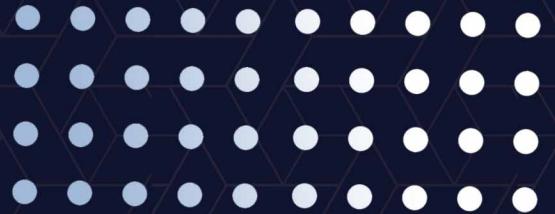
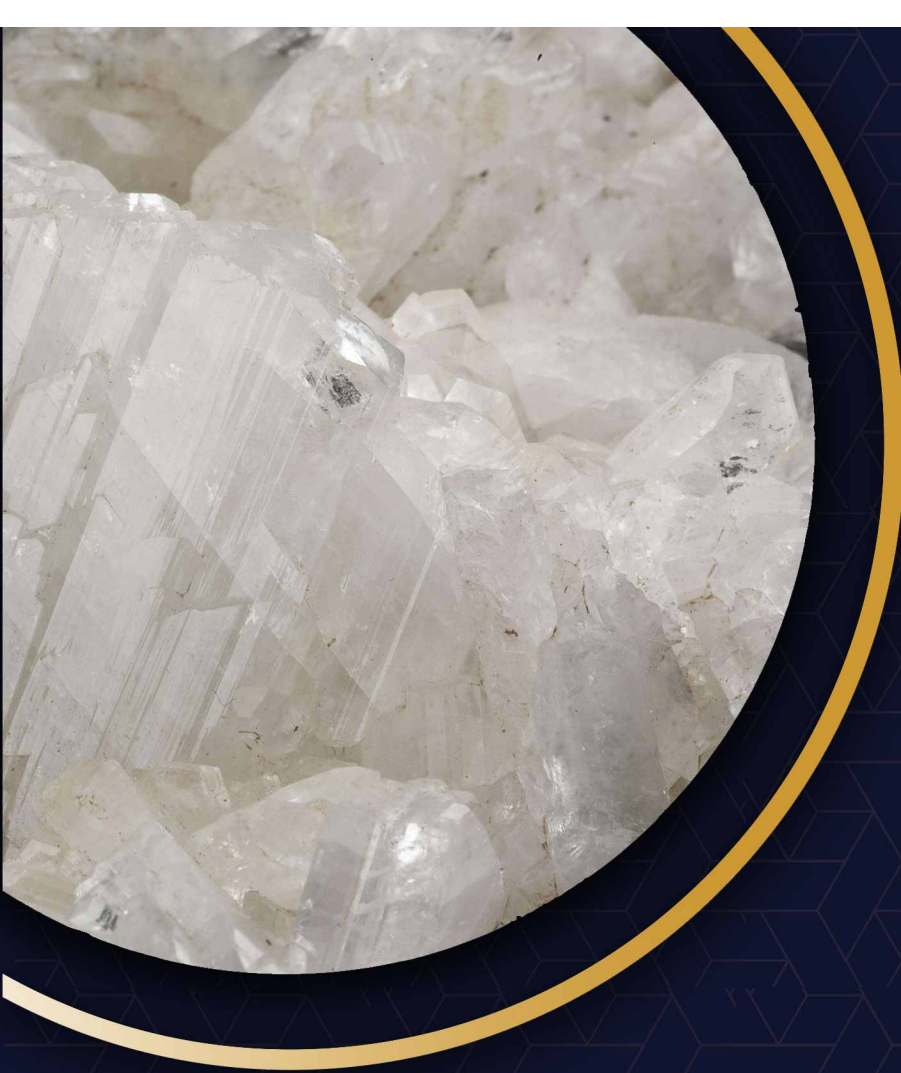


Commercial
Group
Baritech



Kaolin

Kaolin, or porcelain soil, is composed of mineral kaolinite or aluminum silicate and is formed when the aluminum silicate in feldspar ores such as granite changes due to weathering or hydrothermal processes. Moreover, kaolin has many physical and chemical properties. This product is applicable as combinations in the coating industry, helping to brighten, smooth out and gain shiny appearance. The initial use of this type of material is in the paper industry, and this compound acts as a paper coating and improves its printability.



Different types of Kaolin appearance

- White Kaolin
- Yellow Kaolin
- Red Kaolin
- Pink Kaolin



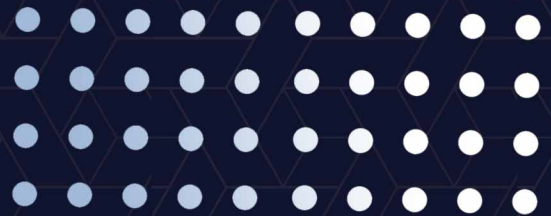
Kaolin Properties

- Hardness
- Flexibility
- Polished and High gloss
- Bleaching capability
- Softening capability
- Fillers and coatings



Kaolin Applications

- Production of different types of sunscreens and toothpastes
- Production of agricultural fertilizers
- Use in plastics, polyester, and P.V.C industries
- Rubber elastic booster
- As the main material of white color in the paint sector



Ball Clay

Ball Clay or industrial clay is a type of granular sediment soil widely used due to its flexibility and fire resistance. Ball Clay can be divided into two categories:

- Clays which often contains a significant carbon percentage.
- Clays with little or no carbon percentage and with a significant percentage of quartz sand.

Ball Clay is composed of high variable compounds such as kaolinite, mica, quartz and is offered to the markets in the form of pellets.



Ball Clay Applications

- Sanitary ware production
- Ceramic tableware production
- Ceramic tiles production
- Fertilizers and insecticides production
- Horticulture, agriculture, and polymers



Bentonite

Bentonite is a natural material composed of smectite clay. This type of product is produced by converting volcanic cinder to clay minerals in marine environments and is discovered as a layer among other ores. Bentonite is mainly composed of crystalline minerals and the smectite group containing iron, magnesium, sodium, or calcium.



Bentonite Applications

Therapeutic uses

- Skin and allergies
- Gastrointestinal toxins repulse
- Health care improvement
- Mineral Provider



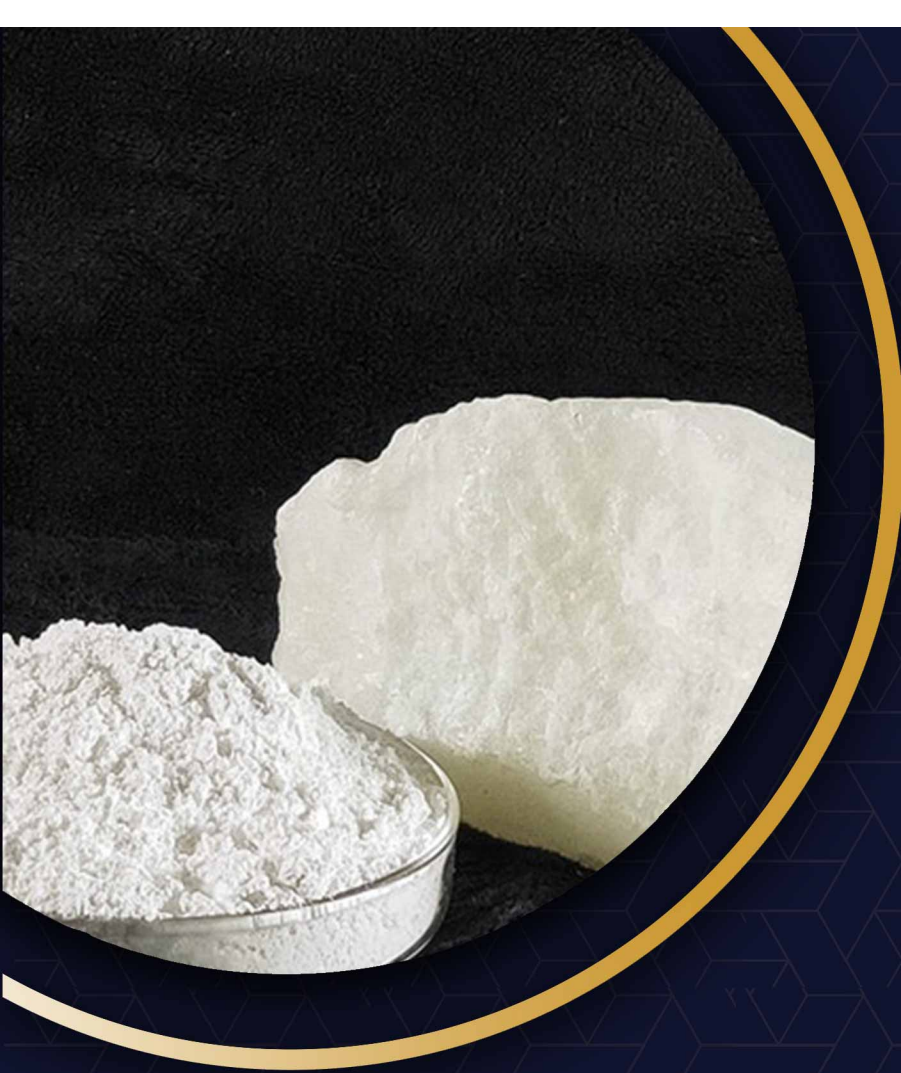
Building Projects

- At the dam base
- Sealing pools
- Walls laying



Talc

Talc is a magnesium-enriched mineral made of silicate and divided into pure and impure ones. Pure talc is one of the rarest minerals in the nature and impure talc is recognized as an acid solvent due to its combination with manganese oxide, carbon, and iron. The highest amount of talc is in Schist and Serpentine stones.



Different types of Talc

- Mixed talc
- Graded talc



Talc Applications

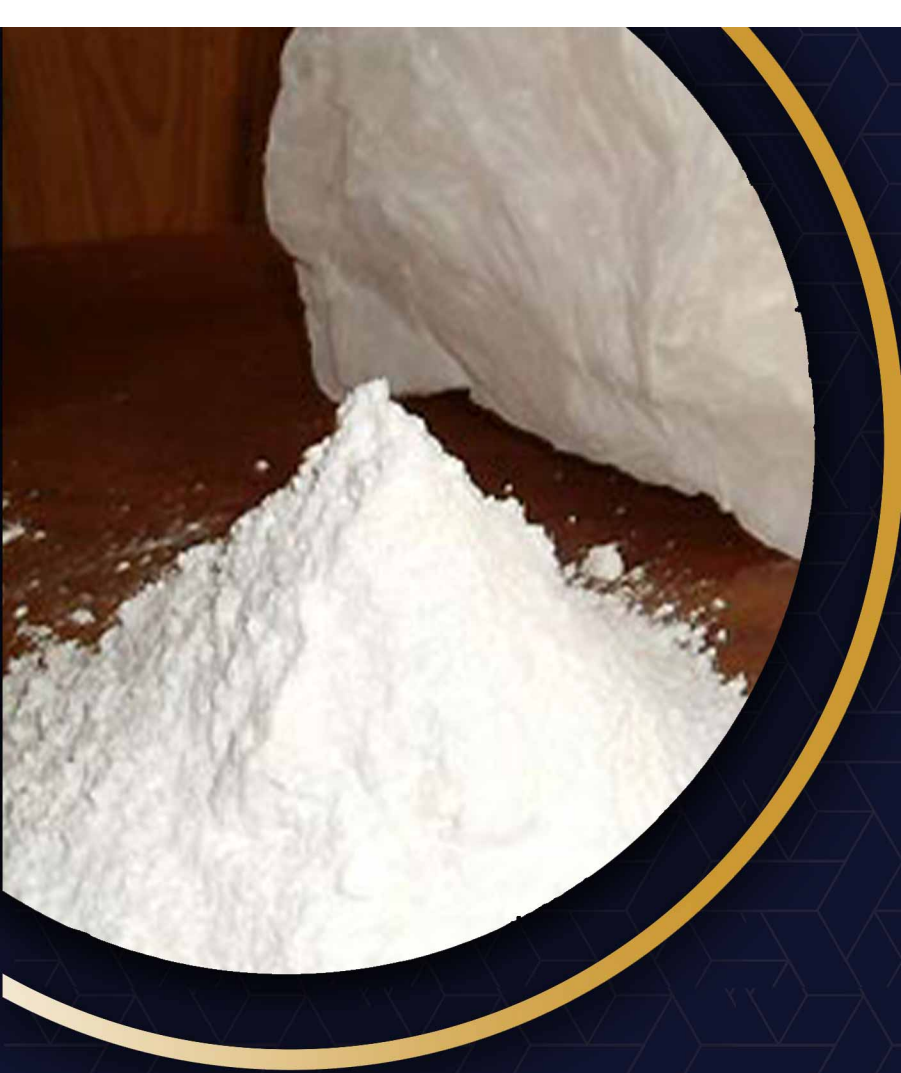
- Painting industry
- Cosmetics industry
- Paper industry
- Rubber industry

Moreover, this type of product is a suitable absorber for oils, perfumes, and moisture.



Feldspar

Feldspar is a crystalline mineral composed of aluminum, sodium, potassium, and calcium silicates found in igneous rocks. Due to weathering, feldspars leave white spots after releasing in desert areas. Furthermore, this type of product is used for the paints production, sealants, plastics, producing ceramic tile parts, and sanitary ware.



Dolomite

The main compound of dolomite elements are magnesium oxide and lime, however other elements such as potassium and iron may also exist in its structure. Most of these products are found in cream-gray and gray-white colors. Dolomite is used in various industries such as glass, paint, ceramics, metal smelting, etc.



Barite

Barite is a type of mineral consisting of celestine, anglesite and anhydride. This type of material is used in various industries found in sands and pebbles and sometimes in the form of crystals. The oil and gas industry are the main consumers of this compound globally, which has led to rise in the barite prices. As the applications of this product, we can mention its use in the rubber producing, drilling mud, painting, glassmaking, cosmetics production industries.

